

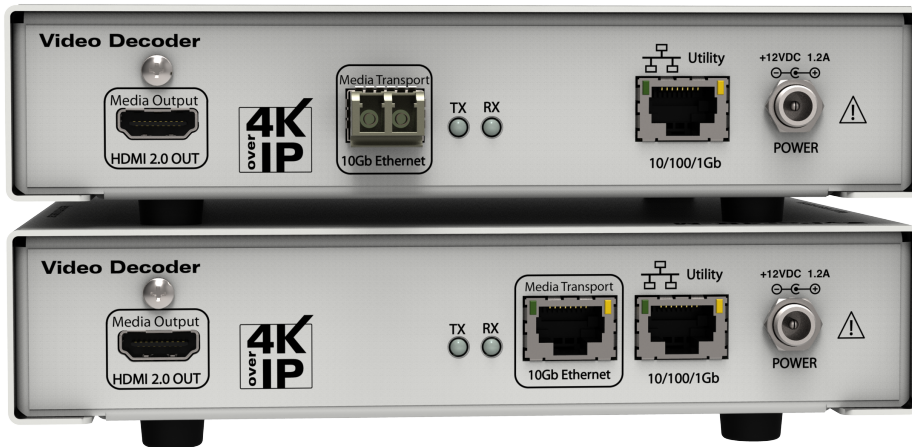


Intelligent AV Distribution

ZyPer4K

VESA Mount Datasheet

Updated August 2021



Contents

ZyPer4K VESA Mount	3
VESA Mount details	3
Installing the mount to ZyPer4K Standard Units	4
Installing the mount to ZyPer4K-XS Units	5
Mounting Examples	6
Disclaimers	9

About ZeeVee:

ZeeVee is the leading manufacturer of high-quality encoder/modulator/decoder products for video distribution over any type of transmission media; be it RF coax, fiber, or copper ethernet.

Established in 2007, ZeeVee has been manufacturing industry-leading products while operating the company responsibly in compliance with the strictest levels of regulatory and environmental requirements. The standards by which we govern our corporate conduct are far higher than that required by law.

Our mission is to completely fulfill the toughest customer application requirements with the highest quality products we can produce. After the sale, we strive to support the customer with award-winning support and service. Our goal is that no customer shall be ever be dissatisfied. It is both our mission and our passion.

ZeeVee, Incorporated
295 Foster Street, Suite 200
Littleton, Massachusetts
01460, USA

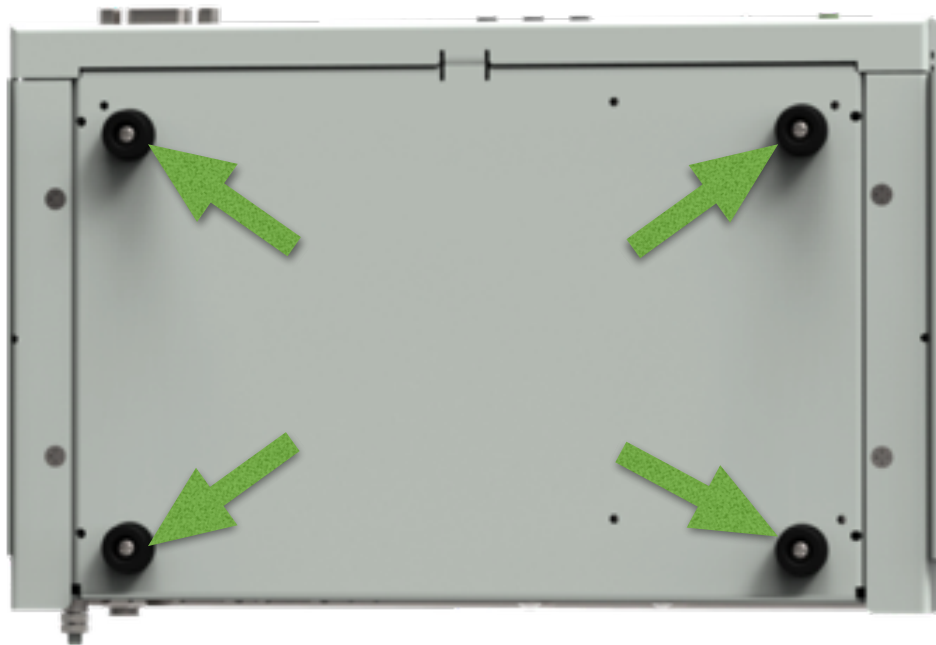
www.zeevee.com
support@zeevee.com
Phone: 1-877-493-3833

Installing the mount to ZyPer4K Standard Units

The VESA mount hardware is compatible with all ZyPer4K decoders with the exception of the Z4K Decoder with integrated Dante transmitter. Compatible with single HDMI input encoders. Not compatible with Dual HDMI, DisplayPort, SDI or Analog input encoders.

Use the following procedure to attach the VESA mount to a ZyPer4K Standard unit.

1. Remove the 4 rubber feet from the underside of the ZyPer4K Standard unit.
2. Retain the screws as they will be used to affix the VESA mount to the ZyPer4K unit body. The rubber feet are not used when mounting with the VESA mount.



3. Use the screws saved in the previous step to attach the ZyPer4K decoder to the VESA mount. (4 inner 3.18mm “small” holes on the mount bracket)
4. Attach the VESA mount with ZyPer4K decoder attached to the rear of the display using appropriate VESA holes and screws. (Screws not provided by ZeeVee)

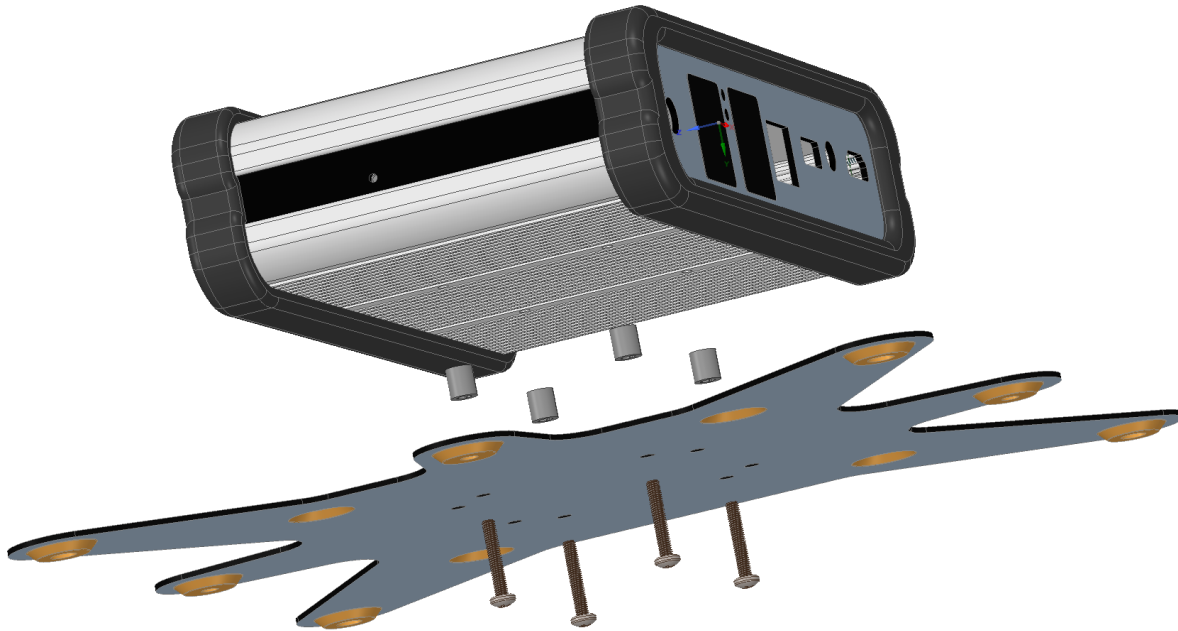
Note that the ZyPer4K decoder can be attached to the display either directly over the VESA mount holes or off to either side. This bracket can also be used to mount ZyPer4K units to walls, ceilings, under desks etc...

Installing the mount to ZyPer4K-XS Units

The VESA mount hardware is compatible with all ZyPer4K-XS units

Use the following procedure to attach the VESA mount to a ZyPer4K-XS unit.

1. Mount XS units to the center 3.5mm holes using the provided M3x18mm attachment screws and M3-7mm spacers. Do NOT remove the rubber rings around the ZyPer4K-XS unit.

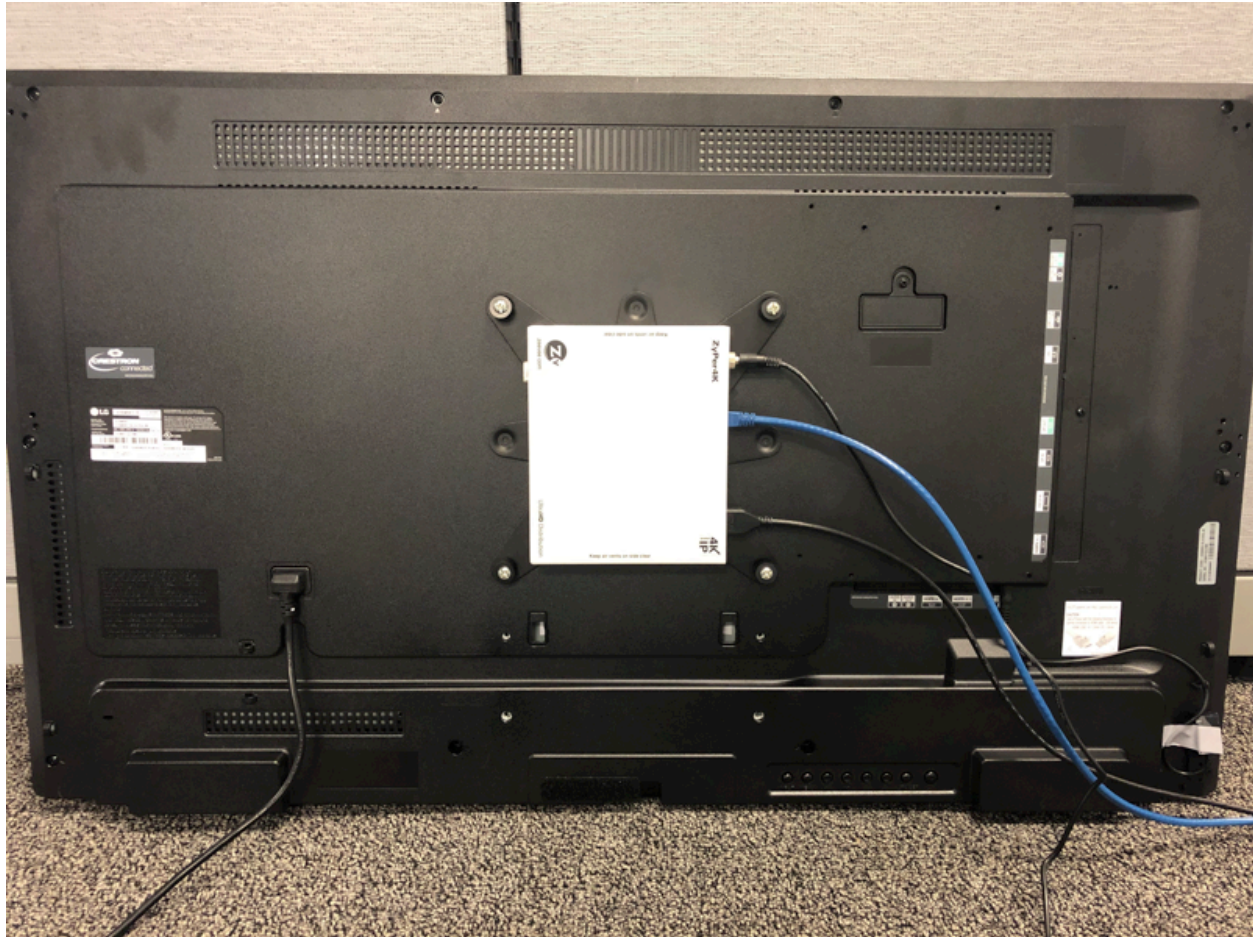


2. Attach the VESA mount with ZyPer4K unit attached to the rear of the display using appropriate VESA holes and screws. (Screws not provided by ZeeVee)

Note that the ZyPer4K unit can be attached to the display either directly over the VESA mount holes or off to either side. This bracket can also be used to mount ZyPer4K units to walls, ceilings, under desks etc...

Mounting Examples

Example of ZyPer4K decoder mounted directly over 200 x 200mm VESA mount holes.



Example of ZyPer4K decoder mounted to left of 200 x 200mm VESA holes. Note the direction of ZyPer4K unit and cables. This mounting allows use of VESA holes for display mounting.



Example of ZyPer4K decoder mounted to right of 200 x 200mm VESA holes. Note the direction of ZyPer4K unit and cables. This mounting allows use of VESA holes for display mounting.



User should always ensure ZyPer4K units have free space above and below in these installations to provide needed air flow.

Disclaimers

ZeeVee has striven to insure that this document is accurate and represents the described products fully. Although, ZeeVee assumes no responsibility for errors found, should any be found, please contact support@zeevee.com and corrections will be issued as appropriate.

ZeeVee hardware designs are property of ZeeVee.

Components, sub-assemblies, and methods utilized in the designs are free of any encumbrances or appropriate licenses and rights have been obtained by ZeeVee for the use in the described products in the intended manner.

ZeeVee software is the sole property of ZeeVee except within the restrictions and guidelines of any open-source or public-license component utilized. ZeeVee represents that normal usage of the product in a typical customer installation is fully within the granted rights and privileges of any licensed component. Visit www.zeevee.com for further details.

The specifications of the described products may change at any time without notice.

ZeeVee forbids unauthorized disassembly, reverse-engineering, duplication, or any other attempt to recreate all or portions of the hardware or software outside of any use explicitly authorized in writing by ZeeVee.

Trademarks

All trademarks are the property of their respective owners.

Copyright

This document is copyrighted with all rights reserved. This document or any portion contained may not be reproduced or copied by any means - graphically, mechanically, or electronically - without express written authorization of ZeeVee.

© 2017 ZeeVee, Inc. All rights reserved.