

zeevee™

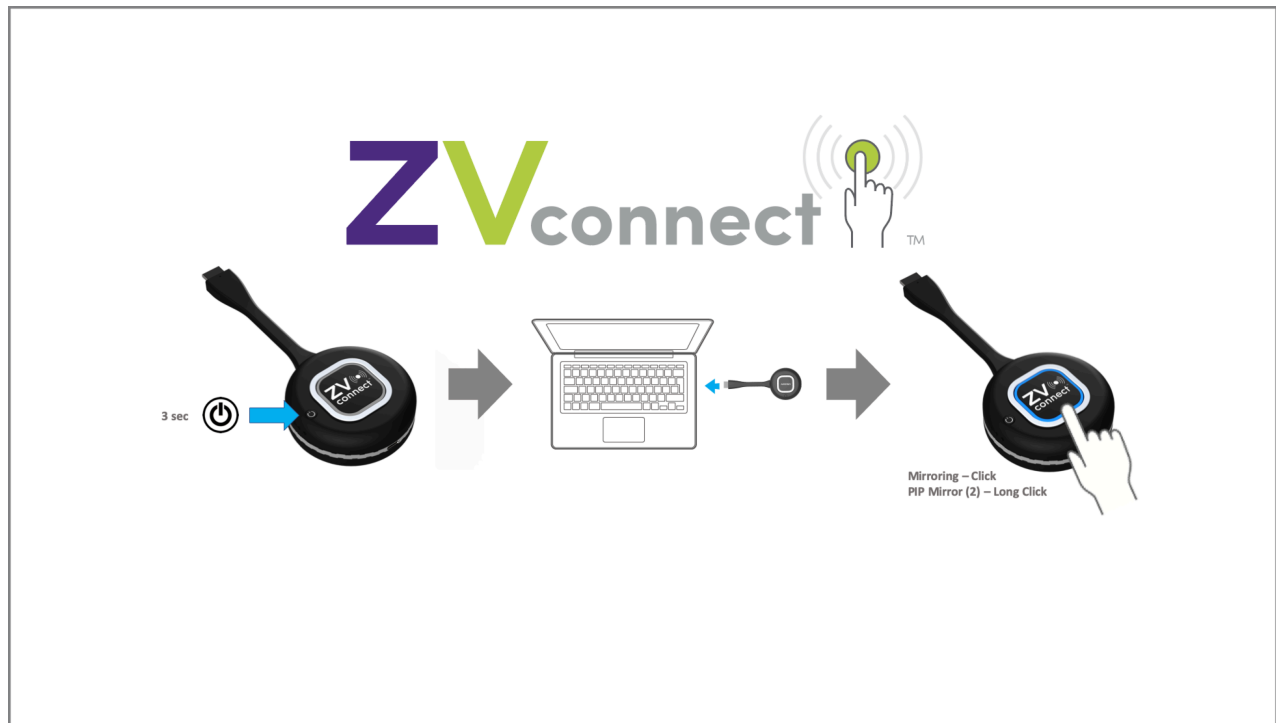
Intelligent AV Distribution

ZVconnect™

WIRELESS PRESENTATION SYSTEM

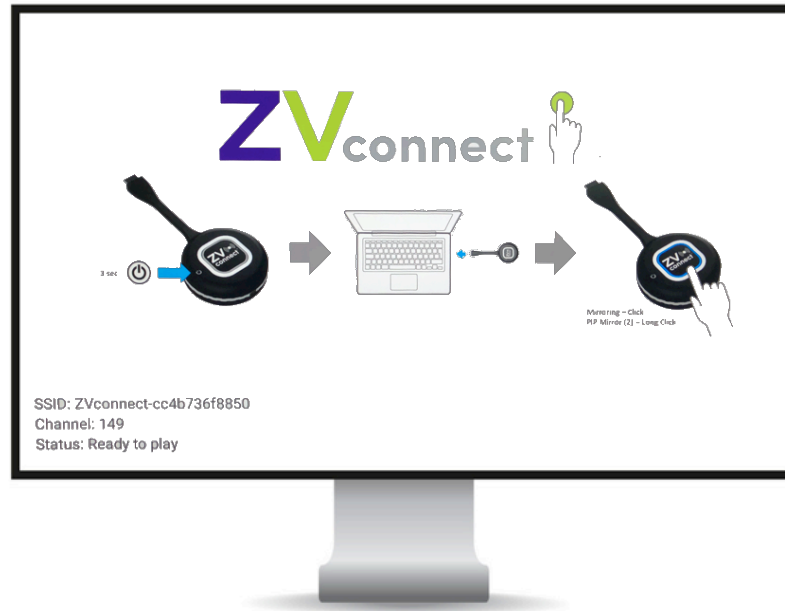
Splash Screen Update

Updated January 14, 2021



Splash Screen Update

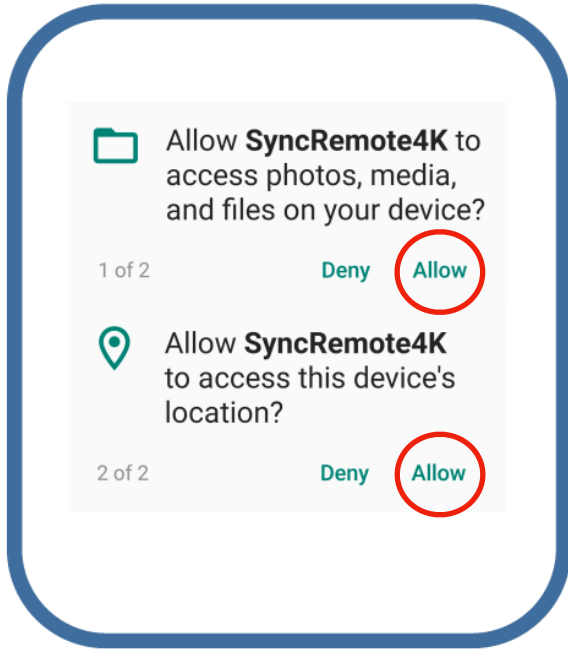
By default the ZVconnect Receiver unit will output a Ready or Splash Screen to the connected display whenever no Transmitter is actively sending video to the Receiver. This screen looks similar to the image below:



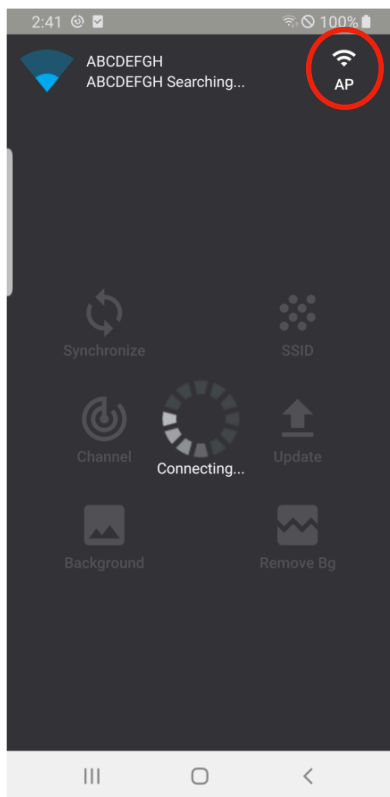
Note: This procedure requires an Android phone or tablet to perform.

This Splash Screen can be customized to any image desired by the user by following the procedure outlined below:

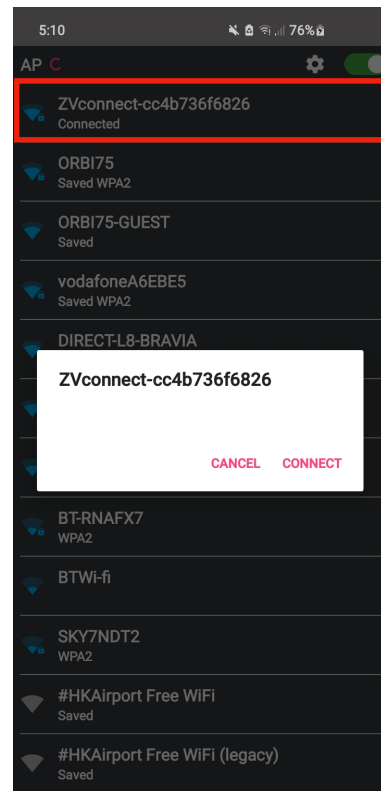
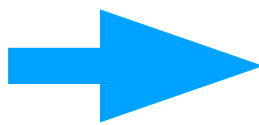
1. Create your desired custom background image. Image must be exactly 1920 x 1080 in size. (It is recommended that the corners be a light color such as white to not obscure ZVconnect Status information.)
2. Install the ZeeVee provided RemoteApp.apk application on an Android phone or tablet.
 - A. Connect USB cable from laptop to Android device.
 - B. From connected laptop you select the Android device in File Explorer
 - C. Go the Download folder in the Android device and you drag/copy in the RemoteApp.apk file **and** your custom background image.
 - D. Click on the RemoteApp.apk file to install on your Android device.



3. Run the RemoteApp application. Allow the application to access photos on your Android device. Allow the application to access the Android device location.
4. Wirelessly connect the Android device to the ZVconnect Receiver.

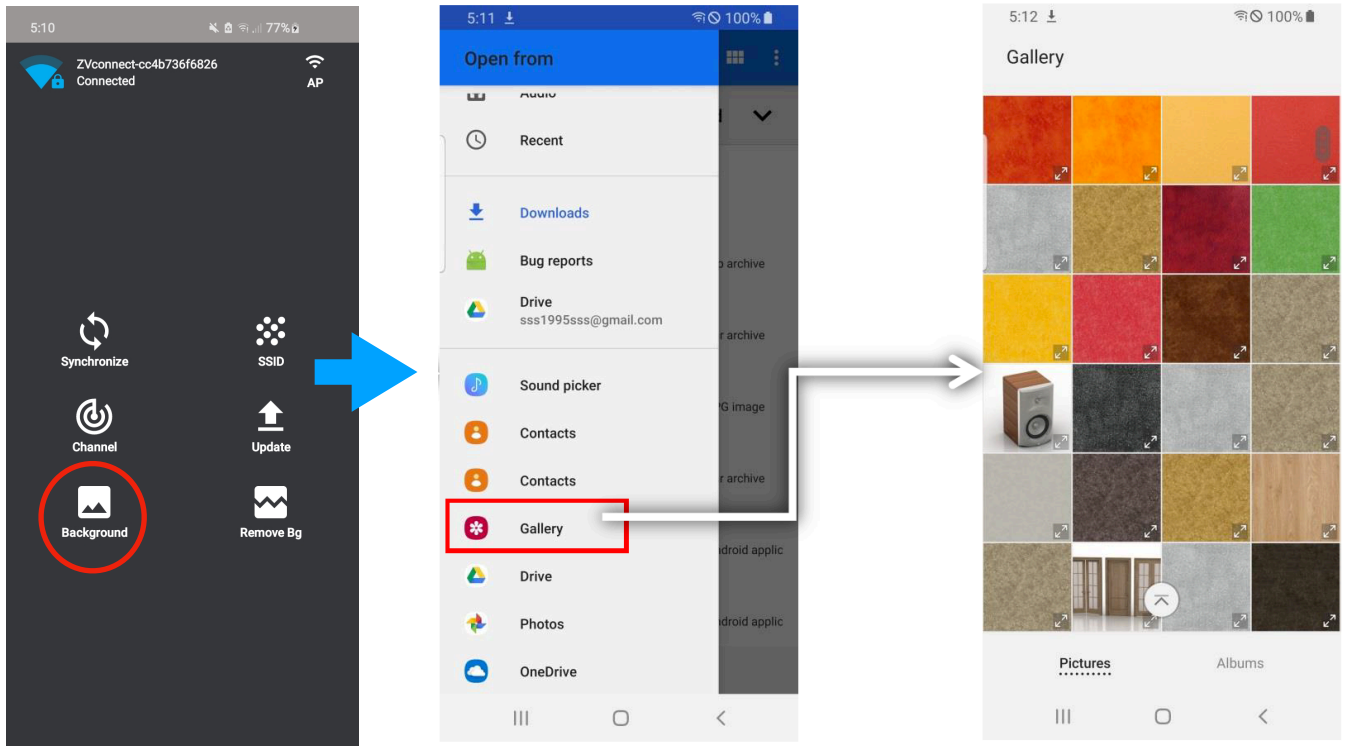


Click



Click

5. Click the Background button
6. Go to Gallery and choose your background image that was previously copied to the Android device. Background image will change in a few seconds. New background will remain unless changed again.



Important Note. To change background image again, First click “Remove Bg” and then the “Background” button.

Disclaimers

ZeeVee has striven to insure that this document is accurate and represents the described products fully. Although, ZeeVee assumes no responsibility for errors found, should any be found, please contact support@zeevee.com and corrections will be issued as appropriate.

ZeeVee hardware designs are property of ZeeVee.

Components, sub-assemblies, and methods utilized in the designs are free of any encumbrances or appropriate licenses and rights have been obtained by ZeeVee for the use in the described products in the intended manner.

ZeeVee software is the sole property of ZeeVee except within the restrictions and guidelines of any open-source or public-license component utilized. ZeeVee represents that normal usage of the product in a typical customer installation is fully within the granted rights and privileges of any licensed component. Visit www.zeevee.com for further details.

The specifications of the described products may change at any time without notice.

ZeeVee forbids unauthorized disassembly, reverse-engineering, duplication, or any other attempt to recreate all or portions of the hardware or software outside of any use explicitly authorized in writing by ZeeVee.

Trademarks

All trademarks are the property of their respective owners.

Copyright

This document is copyrighted with all rights reserved. This document or any portion contained may not be reproduced or copied by any means - graphically, mechanically, or electronically - without express written authorization of ZeeVee.

© 2020 ZeeVee, Inc. All rights reserved.