



# **ZyPer Management Platform Release Notes**

**Software 3.2.1.40080 EMP Special Release**

May 21, 2024

## Revision History

Date	Version	Fixes/Changes
March 29th 2024	3.2.1.39972	General Availability release for ZyPerUHD60-2EMP
April 5 <sup>th</sup> 2024	3.2.1.39972	Updated Documentation so show the Limitation of EMP redundancy not supported but not disabled.
April 8 <sup>th</sup> 2024	3.2.1.39972	Updated Documentation requiring NTP or Date time to be correct for firmware updates to function.
May 17th 2024	3.2.1.40080	Updated GA Version with Mismatch UHD60 firmware warnings

Revision History..... 1

1. Supported Platforms ..... 2

2. New Features..... 2

3. Issues Outstanding ..... 3

4. Known Limitations ..... 4

5. Current Device Firmware and Device Compatibility..... 5

6. Server and GUI Additions, changes, and deletions ..... 5

    Additions ..... 5

**ZyPerUHD60 Product Name changes** ..... 5

**ZyPerUHD60-2EMP**..... 6

**GUI - Zeevee CA Panel Add** ..... 8

7. Upgrading and Downgrading ..... 9

## 1. Supported Platforms

This Release was made for support of the ZyPer EMP (Embedded Management Platform) Server which is embedded in a ZyPerUHD60-2E encoder device. The server runs on a Linux OS 5.4.47 made for Embedded device support. Support limited to ZyPerUHD60-1E, 1D, 2E and 2D device models

**ZyPerUHD60-2EMP will only support up to 20 devices.**

### ZyPer Management Platform

- **(New)** ZEMP on embedded platform - Linux 5.4.47

### ZyPer Management Platform GUI web interface

- Google Chrome

### ZyPer Encoders and Decoders

- ZyPerUHD60-1 HDMI 2.0 encoders and decoders (Not compatible with Existing ZyPerUHD devices)
- ZyPerUHD60-2 HDMI 2.0 encoders and decoders (Not compatible with Existing ZyPerUHD devices)
- **(New)** ZyPerUHD60-2EMP - HDMI 2.0 encoder (Compatible with ZyPerUHD60 decoders)

**NOTE:** On the UHD60-2s, these devices do not support any update package prior to 5.2.

***WARNING: Installing older firmware update files on ZyPerUHD60-2 devices will cause the units to become inoperative.***

## 2. New Features

### Server

- ZEMP Server support (no additional MPs can be introduced on the system with the EMP present)

### GUI

- ZEMP Server support
- Zeevee CA tab added

**Device ZyPerUHD60-2EMP will only support up to 20 devices.**

- ZyPerUHD60-2EMP Encoder
- ZyPerUHD Update Package 5.8 including multiple fixes for the ZyPerUHD60 and ZyPerUHD30 product lines

### Bug Fixes in this release

- Product names now match the ones on the Devices.
- **(NEW)** Fixes for gpg updates – Time changes allow a stable date valid for the gpg package install.

### 3. Issues Outstanding

Component	Issue	Workaround
<b>ZyPerUHD60 - Decoder</b>	Video wall 2 rows by 13 randomly fails to show video on one or more displays	No workaround is available at this time.
<b>ZyPerUHD60 - Decoder</b>	The device is reporting that it is sending video at 4096 on a 2560 max resolution monitor	Forcing a resolution in the GUI Display Grid or CLI for the decoder to 2560 60 FPS will work around this issue.
<b>EMP – Accounts</b>	templInitialPassword does not let you change your password	No workaround is available at this time.
<b>EMP Server – Set Time</b>	If EMP is set with a manual time and not NTP it will lose it's time if powered off	No workaround is available
<b>EMP Server – Telnet Mode</b>	When trying to set the telnet mode on the server CLI to disable the rcServer may lock up.	Rebooting the EMP will allow the EMP to come back up, telnet will be disabled.
<b>EMP Server / GUI - Accounts</b>	Changing the auth mode "set account all authMode web backend" may leave the GUI at a "Waiting for server" screen.	
<b>EMP GUI - Upgrade</b>	There is no warning that restarting the ZUHD60-2EMP device will also restart the EMP as well	The EMP will restart and come back up after the update completes and reboots the host device.
<b>EMP GUI - Upgrade</b>	When upgrading any device in the firmware panel, the GUI will change to "Waiting for Server", this happens even if the device is different than the EMP	This is momentarily and eventually return to the GUI after some time.
<b>EMP FTP – guest account</b>	The guest user is not available for the EMP at this time.	Use of the admin account is supported
<b>EMP and MP Server – Accounts</b>	Password minDays setting is not enforced	No workaround is available at this time.
<b>EMP and MP Server - Save System config</b>	Some system configurations like presets are not saved out of the system config.	No workaround is available at this time.
<b>EMP and MP Server / GUI - Accounts</b>	GUI - Accounts, 'Session has no account' after setting authMode to Backend	No workaround is available at this time.
<b>EMP and MP GUI – General Session</b>	If a User leaves the browser window for from 15 seconds to a minute the session will sometimes kick the user back out to the login screen	The user will need to log back into the GUI
<b>EMP and MP GUI - Display Grid</b>	Export extracts text "IdleImage" from the idle image field and puts it in the column	No workaround is available at this time.
<b>EMP and MP GUI - Preview</b>	The preview video has vertical lines in the video on some encoders.	No workaround is available at this time.
<b>EMP and MP GUI - Source</b>	On occasion, the custom config containing "disconnect" actions will show no actions after saving the config.	Close the browser and restart it if this gets into this state.
<b>EMP and MP GUI – Source - Join-Config</b>	Join configs may be missing after an upgrade.	Reverting the Server will also restore the join configs.
<b>EMP and MP GUI – TLS Panel</b>	Setting TLS mode to either enabled or disabled results in a "Network request	No workaround is available at this time.

failed" message, though the command takes on the ZMP

## 4. Known Limitations

**Device ZyPerUHD60-2EMP will only support up to 20 devices.**

### ZyPerUHD60

Component	Limitation	Workaround
<b>Encoder - HDCP</b>	<p>HDCP, interlacing state, Bit sample, Color Space, and Color Format states may not report correctly on UHD encoders</p> <ul style="list-style-type: none"> <li>• HDCP status – May not report correctly</li> <li>• Interlacing State – Will always show “no”</li> <li>• Color Space – Will always report 444</li> <li>• Color Format – Will Always report RGB</li> </ul> <p>Color bit depth –always reports 8-bit</p>	None
<b>Encoder -EDID</b>	<p>Under the Encoder information output, the EDID used for the encoder may not match the decoder it is joined to. This is part of the design, as the system will load an EDID that it feels is most compatible. This could be an EDID that is either stored in its database or from an active decoder that shares the encoder's connection.</p>	Working as designed
<b>Decoders - CEC off on</b>	<p>It has been found that on some Samsung displays, the CEC “on” command will not return the monitor to an active state. One monitor that experienced this issue was a Samsung 4K UN40JU6500. To activate the TV after encountering this event, a power on must be done.</p>	A power Cycle of the TV is required
<b>Decoders - Sleep mode</b>	<p>When using the sleep mode feature to set the display to sleep (regardless of the decoder connections) displays require a 10-second window if the user wants to disable this mode.</p>	A power reset of the Decoder will be required
<b>Decoder - Audio Limitation</b>	<p>The audio for the Decoder’s HDMI and Analog out port is limited to only one source Encoder</p>	None

### ZyPer GUI

Component	Limitation	Workaround
<b>Join Config</b>	<p>Under the join configurations for UHD or U60 encoders and decoders. If a connection is made for audio and the decoders follow video is set to true, no audio connection will be sent. This happens with individual audio connections with no video defined.</p>	Through the API the join audio connection can be made.

<b>Preview - Thumbnail</b>	When starting Thumbnail videos, sometimes the icons show a pinwheel instead.	A stop and start of the thumbnail video by clicking on the Icon will remedy this issue. Alternatively, a refresh of the GUI will show all the videos enabled.
<b>Video wall</b>	If the name of a Decoder is changed and the video wall that contains said decoder is then opened for editing, the Decoder will no longer be present under the configuration.	After the Decoder name is changed but before the video wall is opened for edit, a refresh can be done. Then the video wall will contain the Decoder with the changed name.

## ZMP Redundancy

Component	Limitation	Workaround
<b>MP Redundancy</b>	<b>There is no support for redundancy in this version for the ZEMP. Redundancy will be attempted but ZEMP should not be placed on a system with another active MP at this time.</b>	None at this time

## ZMP Security limitations

Component	Limitation	Workaround
<b>ZMP Server – Session Expires</b>	When InitialExpire is enabled, the user is forced to choose a password with a minimum length even if minLen=NA	None
<b>ZMP Server – TLS</b>	Currently, TLS is unable to be configured in a redundant server environment. Current support is for Single Server implementations.	None

## 5. Current Device Firmware and Device Compatibility

Device	File version
<b>ZyPerUHD60 Encoders and Decoders 1s and 2s</b>	<b>5.8</b>
<b>ZyPerUHD60 2E ZEMP</b>	<b>5.8</b>

**Important Note: For Firmware updates to function, NTP time or manual time needs to be configured with the proper date time. This is required for any Firmware package to work.**

## 6. Server and GUI Additions, changes, and deletions

### Additions

ZyPerUHD60 Product Name changes

### CLI Enhancement

**Components:** CLI and API

**Overview:** In this version, we corrected the ZyPerUHD60 Model descriptions for the CLI status and config device output.

Below is the old and new Description reference for the following supported units.

Model	Description	Unique Ports	ZMP Product Description	New ZMP Product Description
1E	ZyPerUHD60 Encoder	Combined Analog In/Out Phoenix port, HDMI loop out	ZUHDENC60V2	ZUHD60-1E
2E	ZyPerUHD60 Encoder	Additional HDMI, USB-C video Input, additional Network Utility Port	ZUHDENC60V3	ZUHD60-2E
1D	ZyPerUHD60 Decoder	Standard Decoder Ports	ZUHDDEC60	ZUHD60-1D
2D	ZyPerUHD60 Decoder	Additional Network Utility Port	ZUHDDEC60V2	ZUHD60-2D
EMP	ZyPerUHD60 Encoder with MP Server	Additional HDMI, USB-C video Input, additional Network Utility Port	N/A	ZUHD60-2EMP

## ZyPerUHD60-2EMP

**Components:** CLI, API, and GUI

**Overview:** In this version we now support the embedded MP on a ZyPerUHD60-2E device (EMP). This product houses an operational MP server on a ZyPerUHD60-2E encoder. The encoder is also fully operational and compatible with 1D and 2D model ZyPerUHD60 decoders. The embedded MP operates out of the main 1GB port (not utility) and manages all devices connected to the system.

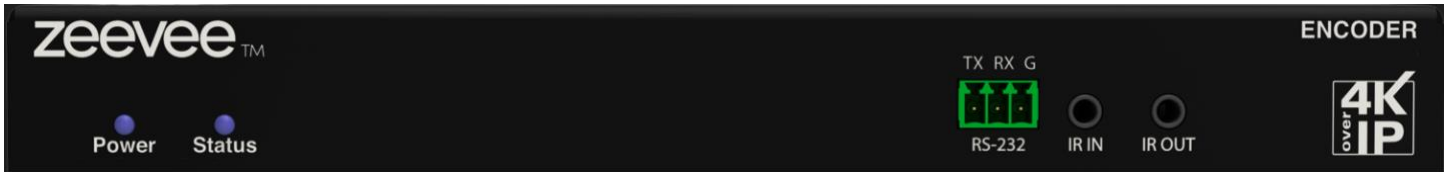
- On the MP server, upgrading uses the same “update server” mechanism with a new type of .zyper MP upgrade file.
- The ZyPerUHD60 part of the device uses the same “update device” mechanism using the up1\_5.X update package file.
- MP Version 3.2.1 is specifically for the EMP Server and does not support any prior server base.

**Operation and Appearance:**

### EMP

For the ZyPerUHD60-2EMP, there are two MAC address labels, one for the ZyPerUHD60-2E and the other, the MAC for the EMP Server. These will be on the bottom of the unit next to the Serial number labels. Other Identifying marks will be on the bottom right of the top of the unit, where it will be marked with an additional “EMP” silk screen as shown below. The device will show up in the CLI and GUI but only as a



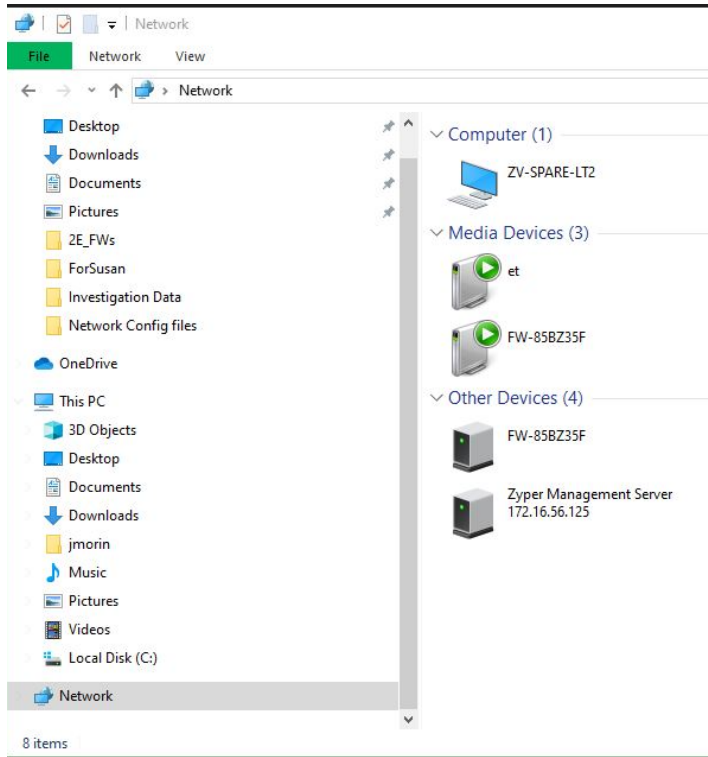
**Front****Back****Connecting to the EMP**

The following methods can be used to find the EMP on a network after the EMP ZyPerUHD60-2E is powered up and connected to the network.

**1) Discovery through Bonjour**

- a. Connect the EMP to the network shared with a windows 10 or above device.
- b. After the EMP is powered on and running for several minutes, open file explorer on the windows machine
- c. In the left pane of the explorer, select "Network"
- d. In the right pane the EMP should be identified as a ZyPer Management Server under Other Devices





**2) DHCP Leases**

- a. Retrieve the EMP MAC address from the bottom of the unit.
- b. By default, EMP is set to DHCP, login to your DHCP server or router
- c. Select the DHCP leases file or open DHCP leases on your router
- d. Find the MAC address of the EMP and the associated IP address.
- e. Connect to the IP via the GUI URL or Telnet application.

D	172.16.56.171	00:1C:D5:01:30:DF	ff:37:41:64:90:0: NMR56_1	172.16.56.171	00:1C:D5:01:30:D	00:03:03
---	---------------	-------------------	---------------------------	---------------	------------------	----------

**Limitations:**

- **ZyPerUHD60 2EMP supports only up to 20 Devices.**
- **There is no support for redundancy in this version for the ZEMP. Redundancy will be attempted but ZEMP should not be placed on a system with another active MP at this time.**

**Important Note: For Firmware updates to function, NTP time or manual time needs to be configured with the proper date time. This is required for any Firmware package to work.**

**GUI - Zeevee CA Panel Add**

**Zeevee CA Panel**

In this release we have broken out the CA Functions of the TLS panel to its own CA panel to allow uses to Generate CA certificates and Sign with CA cert. All Functions and features relating to the CA remain the same from the prior versions when this was part of the TLS Panel.



ZeeVee CA ✕

CA Cert
CA Signed

Status ?	Issuer ?	Expires ?	Country ?	Locality ?	Org ?	Org Unit ?	State ?	Email ?	Generate ?	Cert ?	Cert ?	Private Key ?	Private Key ?
invalid	NA	NA	NA	NA	NA	NA	NA	NA	Generate	Load ▼	Save	Save	Load

ZeeVee CA ✕

CA Cert
CA Signed

Status ?	Issuer ?	Expires ?	Common Name (FQDN) ?	Country ?	Org ?	Org Unit ?	State ?	Email ?	CSR ?	Cert ?
invalid	NA	NA	NA	NA	NA	NA	NA	NA	Sign	Save

## 7. Upgrading and Downgrading

### Unique update files are required for each platform

Starting with release v3.2.1, a new ZyPer MP update file will be available for the EMP device. Please use the correct version for the hardware platform being updated. There is no 3.2.1 version for any other platform, this is a EMP specific release.

File name example:

- ZyPerUHD60-2E ZEMP: update\_zemp\_3.2.1.39972.zyper

### Known issues with upgrading and downgrading

**None for this release**