

ZvPro810/820-NA

1080p HDMI Encoder / Modulator



The ZvPro800 series encoder/modulator delivers uncompromising digital HD video distribution over your existing coax cabling from your HDMI sources. The ZvPro800 series allows you to easily distribute content up to 1080p resolution to an unlimited number of displays, using the TV's built-in QAM tuner, eliminating the need for cumbersome, expensive set-top-boxes or media players at each display.

Manage ZvPro units can be managed locally through the color LCD screen or via an intuitive web-based, management interface – Maestro. Generate a looping signage channel with ZvShow, deliver messages to any screening using the built-in Emergency Alert System.

SUPERIOR VIDEO QUALITY

- Full MPEG-2 implementation
- I, P, and B Frames
- Low latency
- Full motion estimation with a wide search range

EXTENSIBLE ARCHITECTURE

- Easy downloadable firmware updates
- Future enhancements provided regularly
- Emergency Alert System (EAS)

The ZvPro supports AC-3 audio encoding and the included Closed Captioning makes your installation ADA compliant.

MODELS:

ZvPro810-NA
ZvPro810i-NA

1 x HDMI video input up to 1080i/1080p

ZvPro820-NA
ZvPro820i-NA

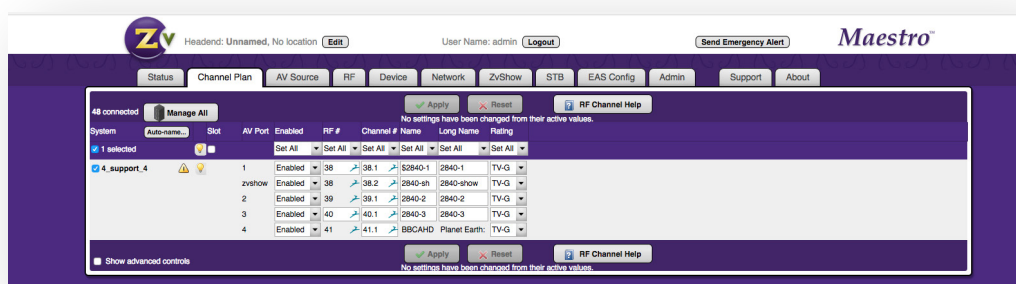
2 x HDMI video input up to 1080i/1080p

HIGH RELIABILITY

- Low-stress power system
- Full system instrumentation and monitoring
- Official international regulatory approval
- Forced air cooling for effective thermal control

EASE OF MANAGEMENT

- Powerful, highly intuitive web interface
- On-site or remote management
- Configure/manage multiple units from front Panel Display for local management



ZvPro 800 Series Web-based Administration Interface

General

Power: 100-240 VAC 50/60 Hz, 36W max. 18W Typical IEC 60320-C14	Cooling : Internal cooling fan, front inlet, rear exhaust MTBF: 62,000 hours System Weight: 3.1 lbs. (1.4 kg)	Temperature/Humidity: Operating +32 F° to +113 F° (0 C° to +45 C°) / 10% to 80%, non-condensing
Compliance: FCC Class A, IEC60065, EN61000 (see manual #70-00047), CE, RoHS	Enclosure Dimensions: 8 in. (H) x 10 in. (W) x 1.75 in. (H) 20.32 cm (H) x 25.4 cm (W) x 4.445 cm (H)	Enclosure Type: Metal Shipping Weight: 5 lbs. (2.3 kg)
Mounting: Shelf mount flange or rack ears (ordered separately), 1 RU high	Carton Dimensions (individual): 2.75 in. (H) 14 in. x (W) 12 in. (D) 6.985 cm (H) 35.56 cm (W) x 30.48 cm (D)	Warranty: 5 Years Vibration: NSTA 1A in carton

Input

HDMI x2 or x1: One (1) or two (2) ports per model up to 1080HDMI 1.3 compliant. Backwards compatible to DVI 1.0 specifications	Closed Caption: EIA/CEA-608 captions accepted over composite video input	Extra Digital Channel: MPEG2 program stream file, up to 200 MB
Audio Input: Digital Audio and Stereo Analog	Digital as element of HDMI 1.3 port or 3.5 mm stereo female, line level input per channel	

Video Encoder

Encoder Video Profile: MPEG2 HD: ISO13818-2 MainProfile@ HighLevel	Traffic Shaping: Variable Bit Rate	Video Encoding Data Rates: Variable, 10 Mbs - 24 Mbs per channel
Average Encoding Data Rate: 18 Mbs per channel	Encoding Latency: Programmable 200 msec to 400 msec	Color Profile: 4:2:0
Encoder Audio Profile: ATSC A/52, (AC-3)	Video, Audio PID: Programmable starting value	Program Information: Programmable program name, EIT
GOP Size: 15		

Modulator/Upverter

Modulation Types: QAM 256 and 64 (ITU-T J83 Annex B) Interleaving modes: (64,2) only	Cable Standard: HRC, IRC or STD	Frequency Range: Single or one paired, frequency agile QAM RF CATV channels 2-135
Output Power: +45 dBmV typical	Output Level Adjust: 25 - 45 dBmV in 1dBmV steps	<ul style="list-style-type: none"> • 2kHz resolution • +/- 30 ppm accuracy • +/- 35 ppm stability
I/Q Amplitude Imbalance: < 1% typical	Spectral Tilt: < /= 1 dB over 6 MHz typical	MER : > 38 dB typical

Control Setup

Network Interface	10/100 Mb Ethernet via RJ45 connection IP address via DHCP or set by user HTML/Javascript served web interface for easy configuration Telnet connection for CLI scripting Easy firmware updates All settings saved in NV storage
Front Panel Color Display	Quickly obtain status at a glance, basic configurations, software revisions and updates

About ZeeVee

The company has revolutionized the pro AV and IT industries with its award-winning encoders, decoders and software. Integrators and AV consultants rely on ZeeVee for its reliability, excellent value and easy-to-install AV over IP and RF distribution platforms for enterprise, academic, government, healthcare, casino, museum, hospitality and retail customers. The company is a founding member of the SDVoE Alliance. It holds a GSA schedule and its products are TAA-compliant. ZeeVee is headquartered in greater Boston with its European head office in Augsburg, Germany and Southeast Asian offices in Singapore. For more information visit www.zeevee.com