

ZvPro600i Series

Composite/VGA 1080p Encoding/Modulation with IP Streaming



The ZvPro600i series encoder/modulator delivers uncompromising digital HD video distribution over your existing coax cabling from your component or VGA HD sources as well as simultaneous IP streaming with no performance compromise. The ZvPro600i series allows you to easily distribute content up to 1080p resolution to an unlimited number of displays over and RF network, using the TV's built-in QAM tuner, or over an IP network to set-top-boxes connected to displays.

Manage ZvPro units can be managed locally through the color LCD screen or via an intuitive web-based, management interface – Maestro. Generate a looping signage channel with ZvShow, deliver messages to any screening using the built-in Emergency Alert System. The ZvPro supports AC-3 audio encoding and the included Closed Captioning makes your installation ADA compliant.

SUPERIOR VIDEO QUALITY

- Full MPEG-2 implementation
- I, P, and B Frames
- Low latency
- Full motion estimation with a wide search range

EXTENSIBLE ARCHITECTURE

- Easy downloadable firmware updates
- Future enhancements provided regularly
- Emergency Alert System (EAS)

MODELS:

ZvPro610i-EU

1 x DIN input for component video/digital and analog audio or VGA video/analog audio up to 1080i/1080p. MPEG-2 QAM RF output.

ZvPro620i-EU

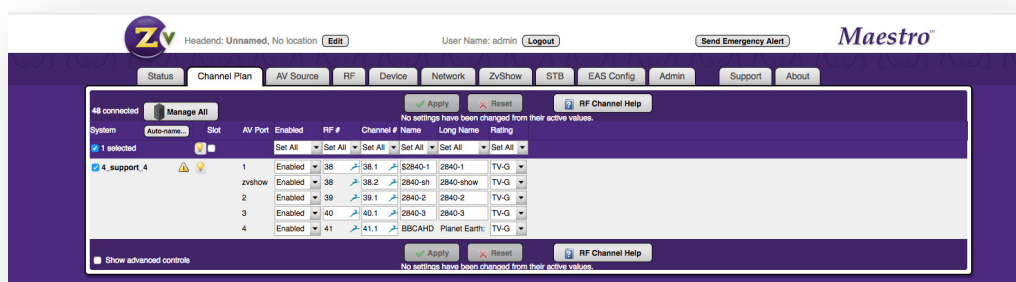
2 x DIN input for component video/digital and analog audio or VGA video/analog audio up to 1080i/1080p. MPEG-2 QAM RF output.

HIGH RELIABILITY

- Low-stress power system
- Full system instrumentation and monitoring
- Official international regulatory approval
- Forced air cooling for effective thermal control

EASE OF MANAGEMENT

- Powerful, highly intuitive web interface
- On-site or remote management
- Configure/manage multiple units from front Panel Display for local management



ZvPro 600 Series Web-based Administration Interface

General

Power: 100-240 VAC 50/60 Hz, 60W max. 30W Typical IEC 60320-C14	Cooling: : Internal cooling fan, front inlet, rear exhaust MBTF: 62,000 hours	Temperature/Humidity: Operating +32 F ⁰ to +113 F ⁰ (0 C ⁰ to +45 C ⁰) / 10% to 80%, non-condensing
Compliance: FCC Class A, IEC60065, EN61000 (see manual 70-00031-00), CE, RoHS, RCM C-Tick	Enclosure Dimensions: 8 in. (H) x 10 in. (W) x 1.75 in. (H) 20.32 cm (H) x 25.4 cm (W) x 4.445 cm (H)	Enclosure Type: Metal Shipping Weight: 5 lbs. (2.3 kg)
Mounting: Rack ears shipped attached, 1RU high	Carton Dimensions (individual): 2.75 in. (H) 14 in. x (W) 12 in. (D) 6.985 cm (H) 35.56 cm (W) x 30.48 cm (D)	Warranty: 5 Years Vibration: NSTA 1A in carton

Input

Component Video x2 or x1: DIN connector HDbridge end, RCA connectors for HD source up to 1080	VGA Resolutions Supported: 640x480, 720x480, 800x600, 1024x768, 1152x864, 1176x664, 1280x720, 1280x768, 1280x800, 1280x960, 1280x1024, 1360x768, 1440x900 at 60 70, 72, 75, 85 Hz. 1680x1050 and 1920x1080 at 60 Hz.	Closed Caption: EIA/CEA-608 captions accepted over composite video input
Computer VGA (Analog) x2 or x1: HD15 connector, 75 Ohm RGB 0 to 0.7V, separate H and V sync		ZvShow: Extra digital channel, MPEG2 program stream file, up to 200 MB
Stereo Analog and Digital Audio x4 or x2	Line level input per channel DIN connector HDbridge end, RCA connector or digital SPDIF audio input. 3.5 mm pigtail connector with VGA	

Video Encoder

Encoder Video Profile: MPEG2 HD: ISO13818-2 MainProfile@HighLevel	Traffic Shaping: Variable Bit Rate	Video Encoding Data Rates: Variable, 10 Mbs - 24 Mbs per channel
Average Encoding Data Rate: 18 Mbs per channel	Encoding Latency: Programmable 200 msec to 400 msec	Color Profile: 4:2:0
Encoder Audio Profile: ATSC A/52, (AC-3)	Video, Audio PID: Programmable starting value	Program Information: Programmable program name, EIT
GOP Size: 16		

Modulator/Upverter

Modulation Types: QAM 256 and 64 (ITU-T J83 Annex B) Interleaving modes: (64,2) only	Cable Standard: HRC, IRC or STD	Frequency Range: Single or one paired, frequency agile QAM RF CATV channels 2-135
Output Power: +45 dBmV typical	Output Level Adjust: 25 - 45 dBmV in 1dBmV steps	<ul style="list-style-type: none"> • 2kHz resolution • +/- 30 ppm accuracy • +/- 35 ppm stability
I/Q Amplitude Imbalance: < 1% typical	Spectral Tilt: < /= 1 dB over 6 MHz typical	MER : > 38 dB typical

Control Setup

Network Interface	10/100 Mb Ethernet via RJ45 connection IP address via DHCP or set by user HTML/Javascript served web interface for easy configuration Telnet connection for CLI scripting Easy firmware updates All settings saved in NV storage
Front Panel Color Display	Quickly obtain status at a glance, basic configurations, software revisions and updates

About ZeeVee

ZeeVee, Inc., headquartered in Littleton, Mass., and founded in 2007, is a leading global developer of digital technology and products for distributing audio-video content from any source or multiple sources to any number of displays. Manufactured in the U.S. and used primarily in commercial and corporate applications, ZeeVee products are employed worldwide by major organizations in education, government, hospitality, retail, sports, entertainment, broadcasting, healthcare, housing, energy and other industries. For more information visit www.zeevee.com

ZeeVee products are TAA Compliant. ZeeVee holds GSA Contract # 47QTCA19D00JZ.

REV20220718