

# HDb2800 Series

HDMI 1080p Encoder/ RF Modulator



For organizations looking to encode and modulate HDMI sources cost-effectively, the HDBridge 2800 Series is a great option. This four channel encoder/modulator allows you to deliver HD video up to 1080p resolution to an unlimited number of displays over almost any distance.

The HDBridge 2800 series converts high definition AV sources into an RF signal received a television's QAM (NA model) or DVB-T/C (EU model) digital tuner over coax cable. With its high 45 dBmV RF output, you can send your content to an unlimited number of displays over nearly any distance.

## SUPERIOR VIDEO QUALITY

- Full MPEG-2 implementation
- I, P, and B Frames
- Low latency
- Full motion estimation with a wide search range

## EXTENSIBLE ARCHITECTURE

- Easy downloadable firmware updates
- Future enhancements provided regularly
- Emergency Alert System (EAS)

Multiple units can be combined to create a headend that supports over 100 channels on the RF network. This unit is designed primarily for high channel density environments where rapid deployment, advanced management, and compatibility are critical.

## MODELS:

### HDb2840-NA

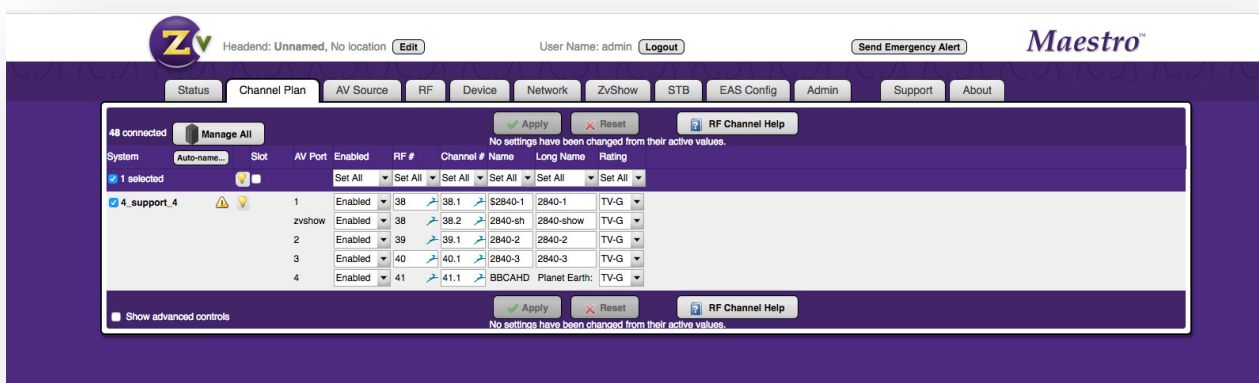
4 HDMI inputs for up to 1080i/1080p component/VGA

## HIGH RELIABILITY

- Low-stress power system
- Full system instrumentation and monitoring
- Official international regulatory approval
- Forced air cooling for effective thermal control

## EASE OF MANAGEMENT

- Powerful, highly intuitive web interface
- On-site or remote management
- Configure/manage multiple units from front Panel Display for local management



HDb2800 Series Web-based Administration Interface

## General

<b>Power:</b> 100–240 VAC 50/60 Hz, 60W max. 30W Typical IEC 60320-C14	<b>Cooling:</b> Dual internal cooling fans, Front inlet, Rear exhaust <b>MBTF:</b> 62,000 hours	<b>Temperature/Humidity:</b> Operating +32 F <sup>0</sup> to +113 F <sup>0</sup> (0 C <sup>0</sup> to +45 C <sup>0</sup> ) / 10% to 80%, non-condensing
<b>Compliance:</b> FCC Class A, IEC60065, EN61000 (see manual 70-00031-00), CE, RoHS, RCM C-Tick	<b>Enclosure Dimensions:</b> 1.72 in. (H) x 17.33 in. (W) (without rack mount ears) x 9.9 in. (D) 43.6 mm (H) x 440.2 mm (W) x 251.5 mm (D)	<b>Enclosure Type:</b> Metal <b>Shipping Weight:</b> 6.25 lbs. (2.84 kg) <b>Shipping Weight:</b> 7.88 lbs. (3.58 kg)
<b>Mounting:</b> Rack ears shipped attached, 1RU high	<b>Carton Dimensions (individual):</b> 4.25 in. (H) 30.875 in. W 12.125 in (D) 108 mm (H) 785 (mm) W 308 (mm) (D)	<b>Warranty:</b> 5 Years <b>Vibration:</b> NSTA 1A in carton

## Input

<b>HDMI:</b> Four (4) ports per model up to 1080	<b>Closed Caption:</b> EIA/CEA-608 captions accepted over composite video input	<b>Extra Digital Channel:</b> MPEG2 Program stream file, up to 200 MB  <b>Encoder Audio Profile:</b> ATSC A/52, (AC-3)
<b>Stereo Analog and Digital Audio x4 or x2</b>	Line level input per channel DIN connector HDbridge end, RCA connector or digital SPDIF audio input. 3.5 mm pigtail connector with VGA	

## Video Encoder

<b>Encoder Video Profile:</b> MPEG2 HD: ISO13818-2 MainProfile@ HighLevel	<b>Traffic Shaping:</b> Variable Bit Rate	<b>Video Encoding Data Rates:</b> Variable, 10 Mbs - 24 Mbs per channel
Average Encoding Data Rate: 18 Mbs per channel	<b>Encoding Latency:</b> Programmable 200 msec to 400 msec	<b>Color Profile:</b> 4:2:0
GOP Size: 15	<b>Video, Audio PID:</b> Programmable starting value	<b>Program Information:</b> Programmable program name, EIT

## Modulator/Upverter

<b>Modulation Types:</b> QAM 256 and 64 (ITU-T J83 Annex B) <b>Interleaving modes:</b> (64,2) only	<b>Cable Standard:</b> HRC, IRC or STD	<b>Frequency Range:</b> 4 paired, frequency agile QAM RF CATV Channels 2-135 • 2kHz resolution • +/- 30 ppm accuracy • +/- 35 ppm stability
<b>Output Power:</b> +45 dBmV typical	<b>Output Level Adjust:</b> 25 - 45 dBmV in 1dBmV steps	
<b>I/Q Amplitude Imbalance:</b> < 1% typical	<b>Spectral Tilt:</b> < /= 1 dB over 6 MHz typical	<b>MER :</b> > 38 dB typical

## Control Setup

<b>Network Interface</b>	10/100 Mb Ethernet via RJ45 connection IP address via DHCP or set by user HTML/Javascript served web interface for easy configuration Telnet connection for CLI scripting Easy firmware updates All settings saved in NV storage
<b>Front Panel Color Display</b>	Quickly obtain status at a glance, basic configurations, software revisions and updates

## About ZeeVee

The company has revolutionized the pro AV and IT industries with its award-winning encoders, decoders and software. Integrators and AV consultants rely on ZeeVee for its reliability, excellent value and easy-to-install AV over IP and RF distribution platforms for enterprise, academic, government, healthcare, casino, museum, hospitality and retail customers. The company is a founding member of the SDVoE Alliance. It holds a GSA schedule and its products are TAA-compliant. ZeeVee is headquartered in greater Boston with its European head office in Augsburg, Germany and Southeast Asian offices in Singapore. For more information visit [www.zeevee.com](http://www.zeevee.com)

ZeeVee products are TAA Compliant. ZeeVee holds GSA Contract # 47QTCA19D00JZ.

REV20240228